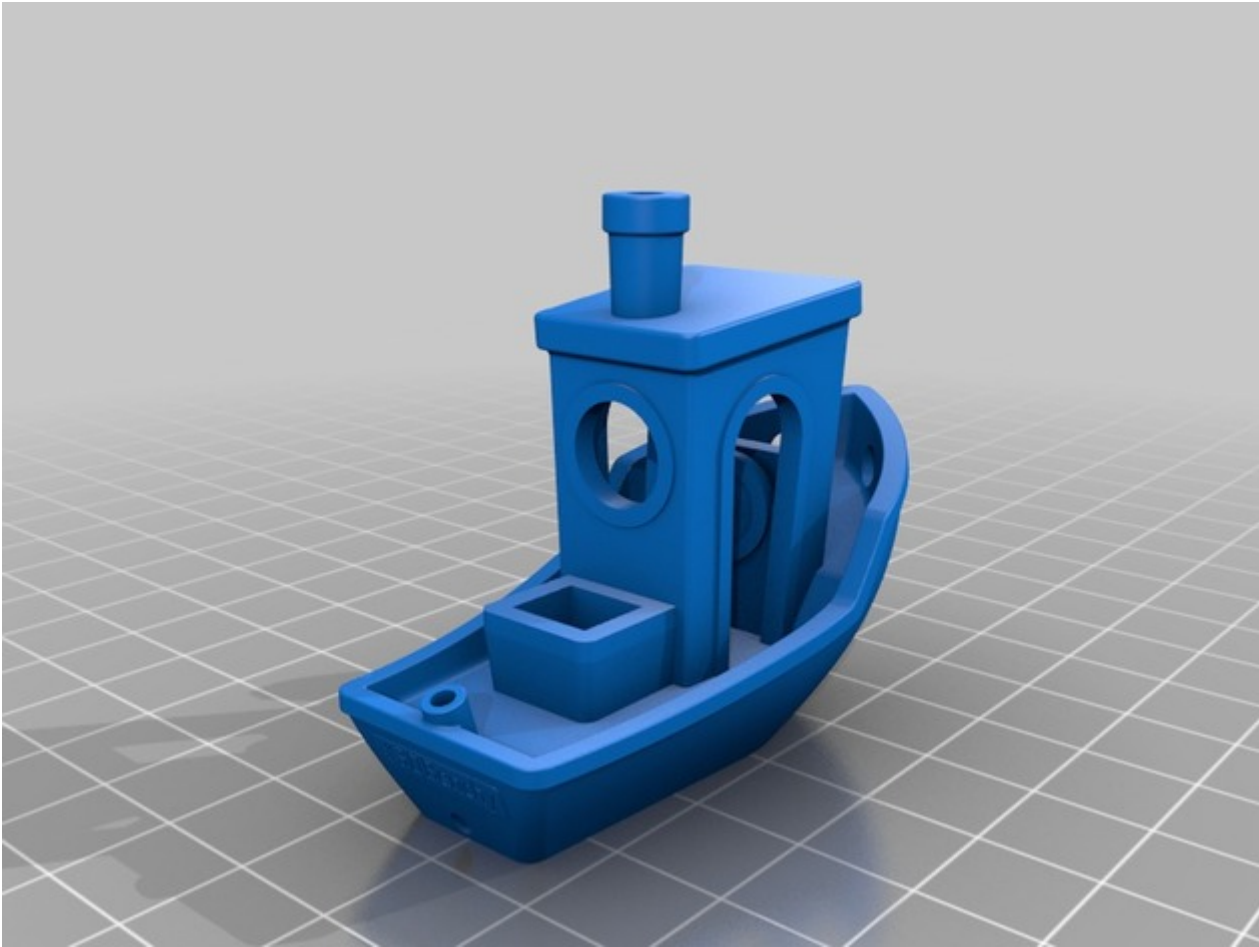


# 23.06.2022 - PLA - Gelb

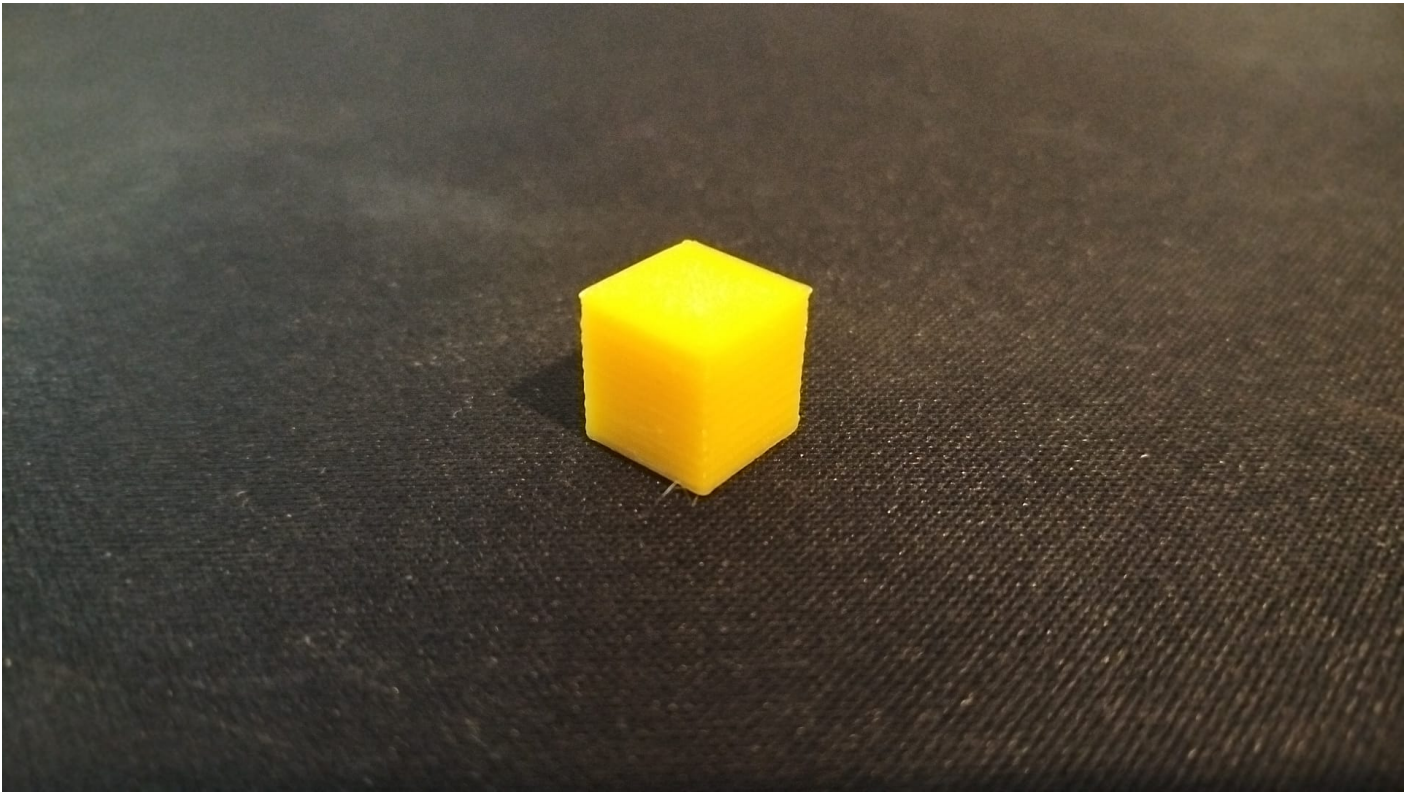


Material	PLA
Color	Gelb
Filament	<u>FIL-000b</u>

Status	Pass
Print Time	01h 54min



---



Status	Pass
Print Time	12min

---

Revision #3  
Created 23 June 2022 17:11:12 by Tobias Jung  
Updated 24 June 2022 01:42:48 by Tobias Jung